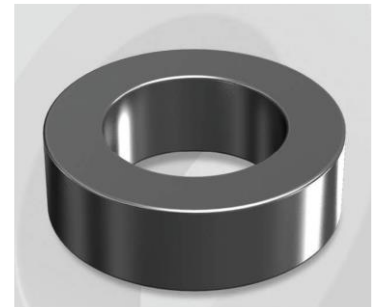


# CK166026G

OD : 166

## Electrical Characteristics

Material	Permeability ( $\mu$ )	AL $\pm$ 8% (nH/N <sup>2</sup> )	DCB (% min) @ 200 Oe	Coreloss (mW/cm <sup>3</sup> , max) @50kHz, 1000G
Mega Flux	26	15	64.4	770



## Core Dimensions

Dimensions		Uncoated		Coated		Color	Packaging
		(mm)	(inch)	(mm)	(inch)		
OD	(Max)	16.51	0.650	17.40	0.685	Black	Box Qty = 1,960 pcs
ID	(min)	10.16	0.400	9.53	0.375		
HT	(max)	6.35	0.250	7.11	0.280		

## Physical Characteristics

Cross Section (A)	Path Length ( $l$ )	Window Area (W <sub>a</sub> )	Volume (V)	Breakdown Voltage (Vac)
0.1920 cm <sup>2</sup>	4.11 cm	0.713 cm <sup>2</sup>	0.7891 cm <sup>3</sup>	1,000
0.02976 in <sup>2</sup>	1.618 in	140,714 cmil	0.0482 in <sup>3</sup>	

## Winding Information

0% Winding length/turn (cm)		
2.209		
40% winding factor Surface Area (cm <sup>2</sup> )		
13.66		
40% Wound Di.(mm)		
OD	ID	HT
19.77	6.24	9.94

## Typical DC Bias Performance

